



**ARDMS<sup>®</sup>**

# Picture Archive and Communication Simulator (PACSim) User Guide

A Video of the PACSim accompanies these instructions which you may refer to for further understanding. [Click here](#) to open the video link.

## **Table of Contents** (Click on the headings below to be redirected to a corresponding section.)

Introduction.....	2
Exam controls .....	2
Delivery mode interactions .....	3
<i>The Layout</i> .....	3
Sample of the Entire Interface.....	7

## Introduction

The Picture Archive and Communication Simulation (PACSim) items are designed to simulate a workstation experience, a picture archive and communications system (PACS).

Each item presents a brief case description or clinical history. Candidates are required to read the case/ clinical history of the patient, evaluate the existing image(s) and answer the statement by selecting options from the drop down menu.

**Exam Controls** – This area contains the standard Pearson VUE examination controls “Next” and “Previous” (Figure 1)

The screenshot displays a PACSim interface. At the top, there is a blue bar with a 'Comment' icon on the left and 'Flag for Review' on the right. The main area is divided into a left sidebar and a central panel. The sidebar contains a vertical stack of six small image thumbnails, with the top one highlighted in yellow. The central panel shows a large ultrasound image of a carotid artery, labeled '1' in the top left corner. Below the image, the text reads 'Left Prox ICA' and 'Left SIDE CAROTID'. To the right of the image is a vertical scale from 0 to -4. Below the image is a text box containing a case description: 'This 68 year old male patient with a history of obesity, hypertension and hyperlipidemiapresents to the vascular lab for testing for an asymptomatic left carotid bruit. The initial duplex exam (images 1-4) and follow up duplex exam in 4 months (images 5 to 7) are shown. Please generate the final report by choosing the best answer for questions 1-4.' Below this text box are four questions, each followed by a 'Select' dropdown menu: 'In the initial study, the left internal carotid artery demons...', 'In the follow up study, the left internal carotid artery den...', 'The right internal carotid artery demonstrated', and 'The right vertebral artery demonstrated'. At the bottom of the interface is a blue bar with navigation buttons: 'End Exam', 'Previous', 'Navigator', and 'Next'.

Figure 1

## PACSim Item Overview

The PACSim question provides test takers with the capability to view a collection of images and/or videos. The test taker then responds to a series of stem prompts referencing the media and selecting a response from the dropdown list control associated with each stem prompt.

## Delivery Mode Interaction

Interaction with the PACSim item in delivery mode can best be described by dividing the user interface into five main areas.

### The Layout

The simulator is arranged into the following areas: (Figure 2)

**Area 1** –Exhibit collection

**Area 2** – Exhibit display

**Area 3** –Case summary

**Area 4** –Stem

**Area 5** – Response options

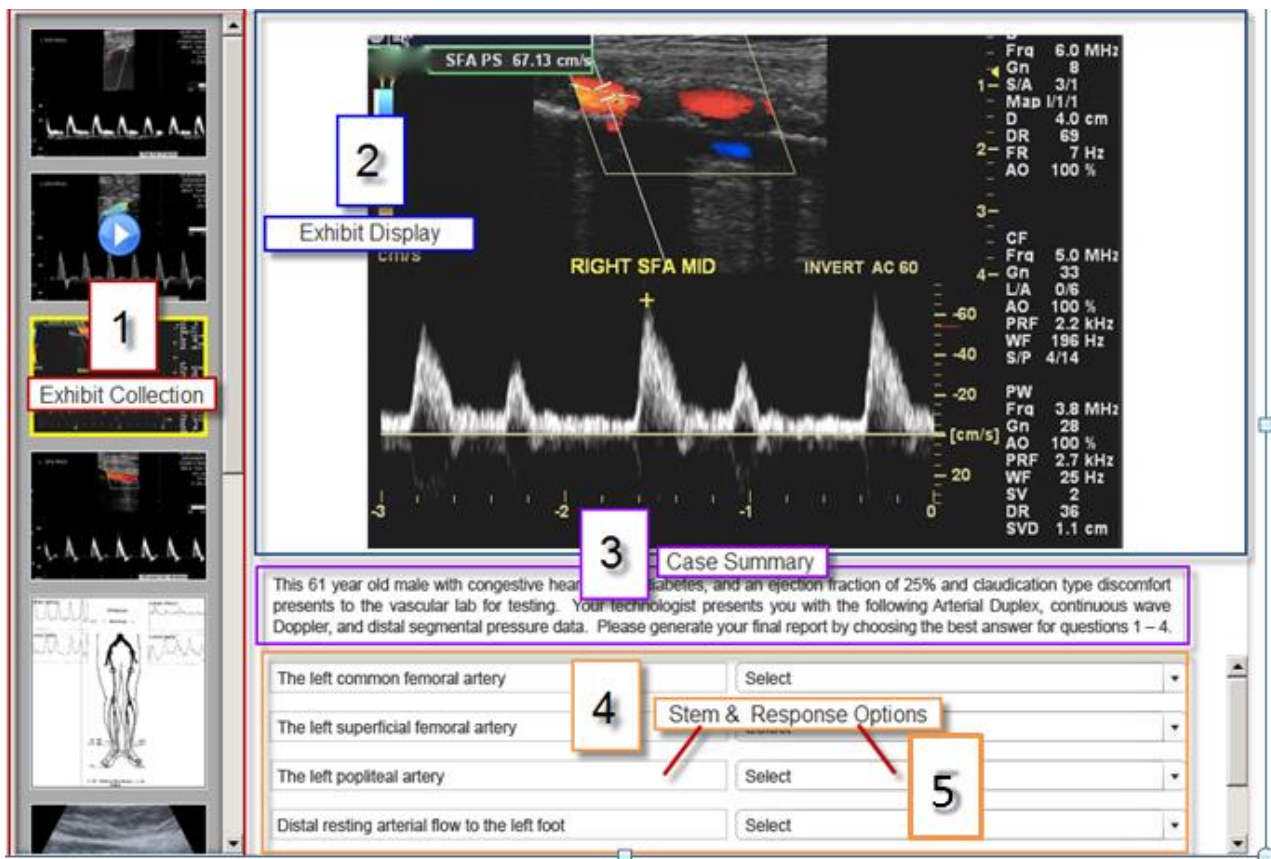


Figure 2

#### 1. The Exhibit Collection

This scrollable list of images contains a still thumbnail image for each piece of media in the collection for the current item. Videos are denoted with a “play” icon that appears in the center of the image. Each image can be clicked on to view the full-size version in the Exhibit Display

area of the screen. The currently selected media is indicated by a yellow border around the thumbnail image. Approximately five items will be visible before having to scroll.

## 2. The Exhibit Display

This area is used to display the full-size version of the exhibit. Both images and videos are displayed. A zoom feature can be applied to enlarge the selected image at a width/height that does not exceed the Exhibit Display viewable area.

### a) Video Exhibits

Videos are displayed with controls at the bottom to allow pause and play (Figure 3)



Figure 3

### a) Image Exhibits

Images can be clicked on to view a zoomed-in version. Once zoomed-in, the image can be panned by moving the mouse in the desired direction across the image. Subsequent mouse clicks\* will trigger the image to revert to its original size.

\*Alternatively, a subsequent mouse click can trigger an increase level of 2x zoom that will fill the entire display area before reverting back to the original size. (Figure 4)

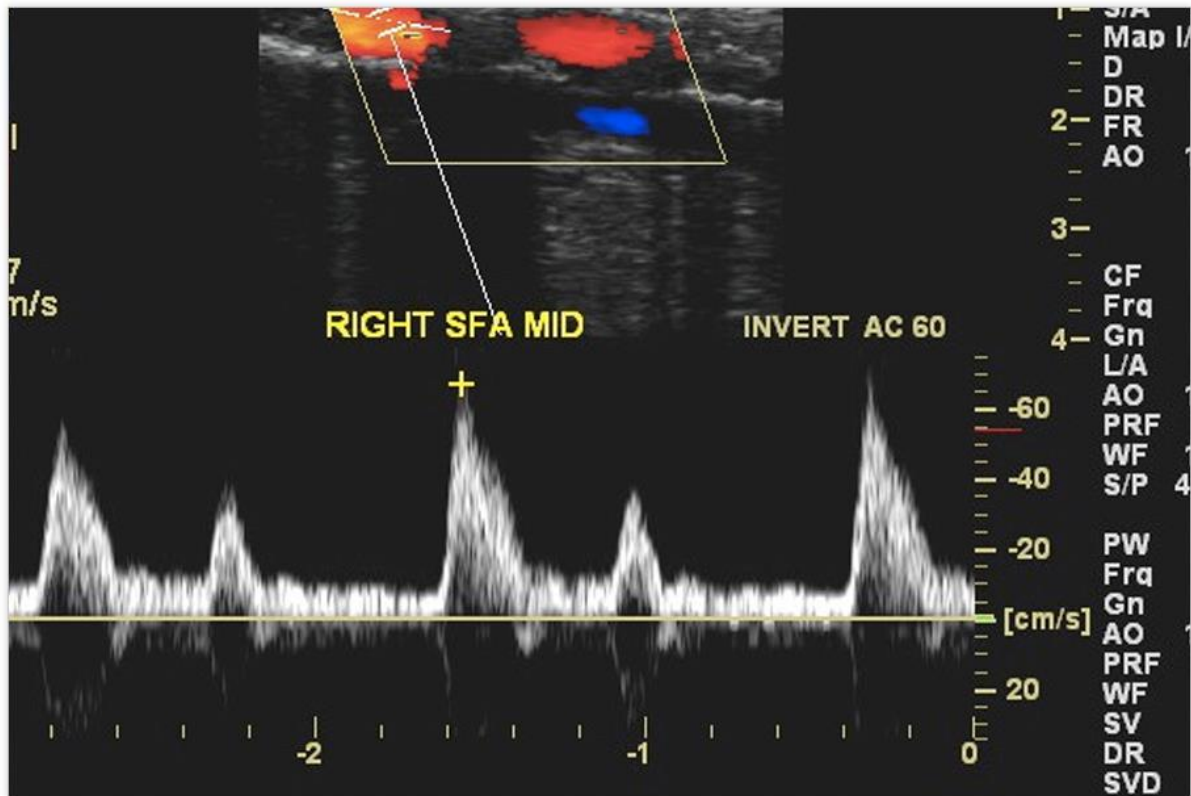


Figure 4

### 3. The Case

The case statement details the patient history, symptoms and prior studies– it is scrollable.

### 4. The Stem

Each response consists of a read-only single-line textbox which contains the Stem Prompt and a corresponding selectable dropdown list of Response options which the test-take can interact with to select the best response for each response Prompt. Up to four Responses can be displayed before scrolling. (Figure 4)



### 5. The Responses

Clicking on the control opens the Response Selection Dialog which displays the full length text for each response and allows selection by clicking on a corresponding radio button or anywhere within the text bounding region. (Figure 5)

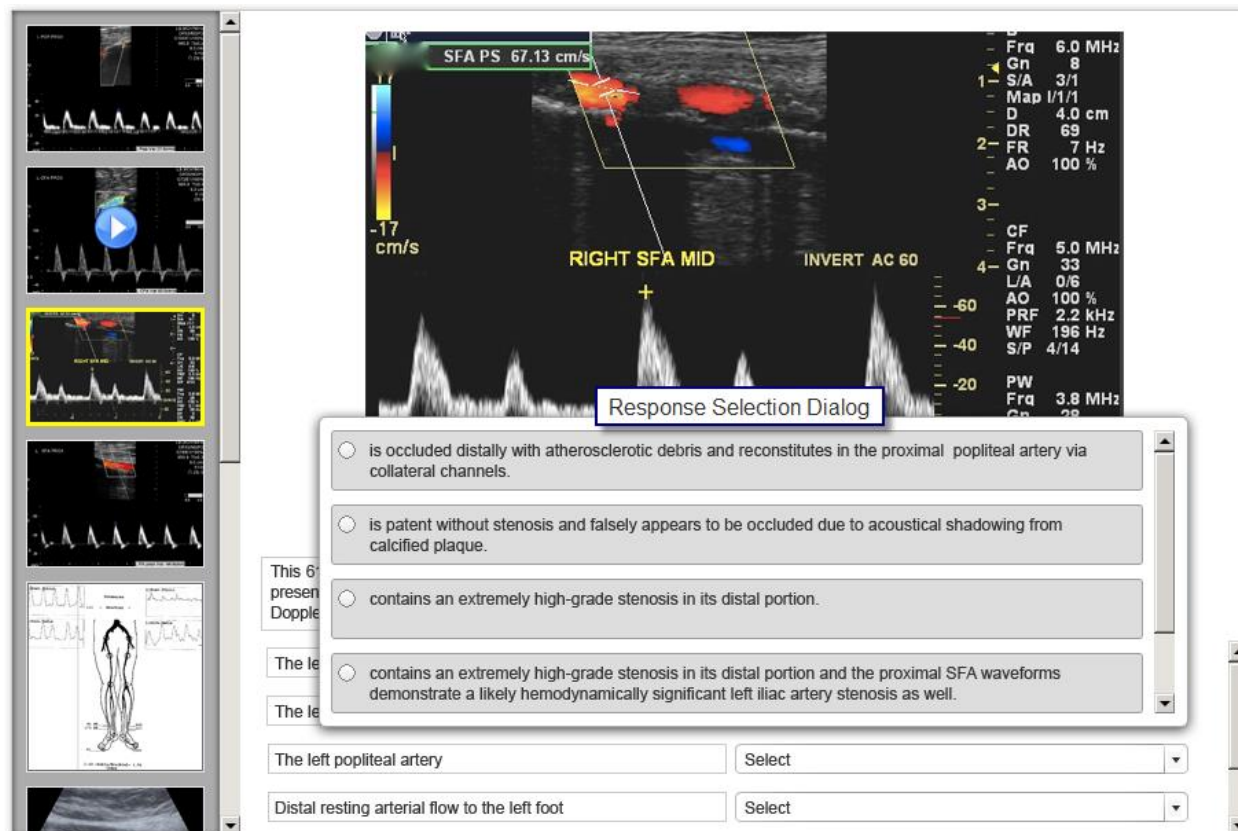
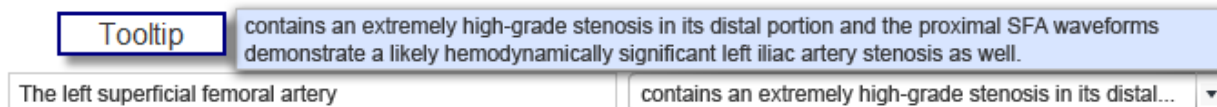


Figure 5

- After a selection is made, the Response Selection Dialog closes. The dropdown control will only display the first (approximately) 50 characters of the selected response; however, the test taker can see the full length text of their selection by viewing a tooltip that appears when the mouse is placed over the dropdown control. (Figure 5)





## 6. Sample of the Entire Interface

The image below shows all of the parts of the interface. (Figure 6)

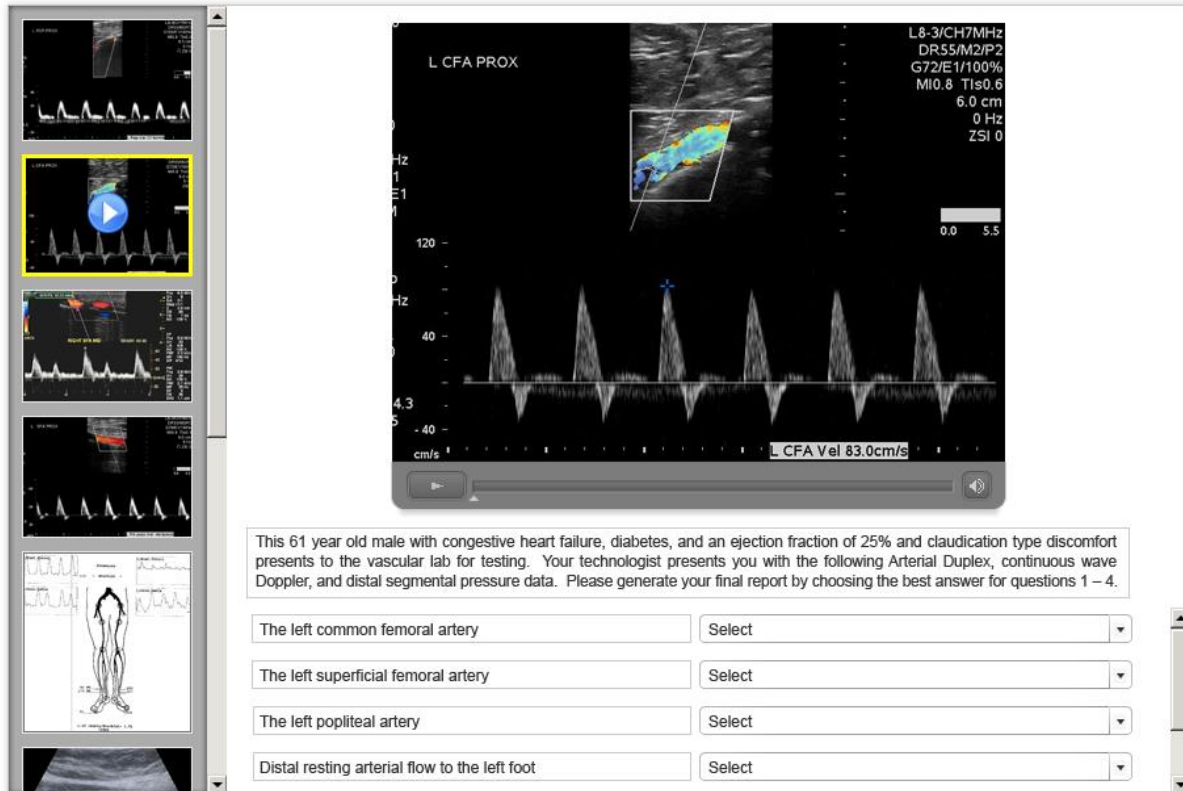


Figure 6